



Parts Manual

Mfg. No: 030467-0
5,000 Watt Briggs & Stratton

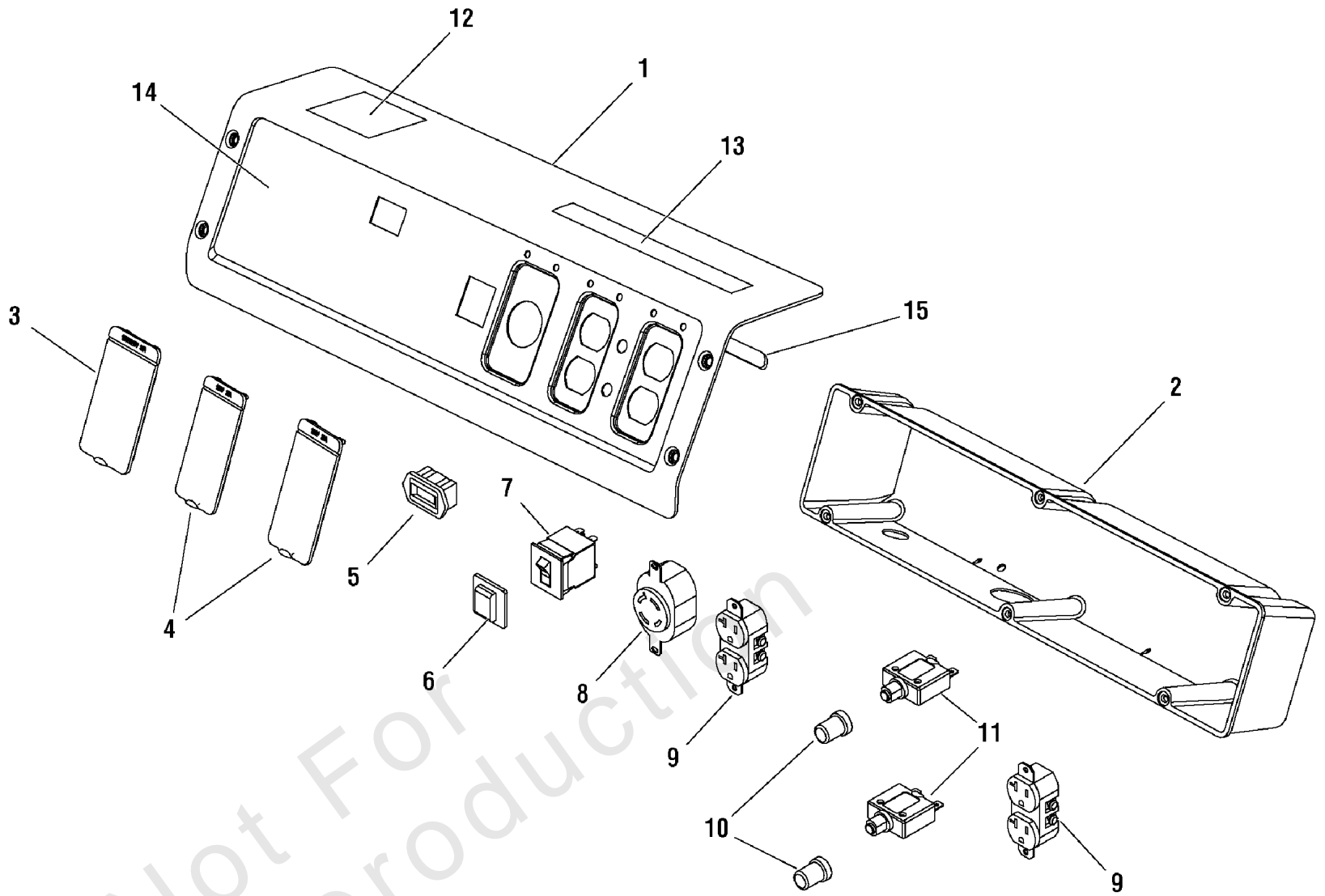
Model Components	Page
Control Panel (312970).....	4
Main Unit (313307).....	6
Wheel Kit (312967).....	10
Wiring Diagram (312495WD).....	12
Wiring Schematic (312495WS).....	14
Torque Specification Chart.....	16

Not For
Reproduction

Control Panel (312970)

Note: Unless noted otherwise, use the standard torque specifications

Mfg. No: 030467-0



Control Panel (312970)

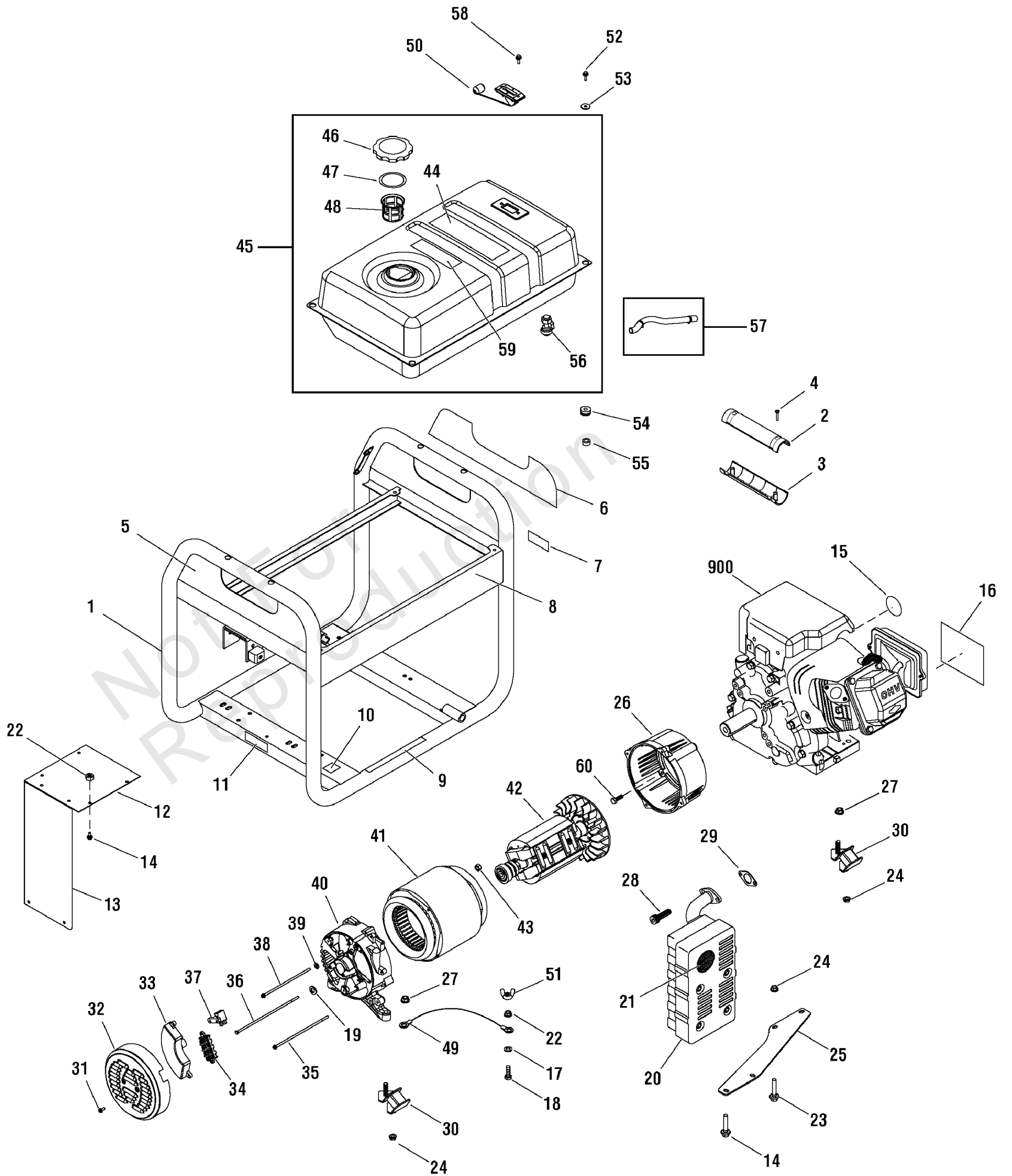
REF NO	PART NO	QTY	DESCRIPTION
1	313287GS		PANEL-CONTROL
2	312978GS		BOX-CONTROL PANEL
3	312030GS		COVER-OUTLET
4	312031GS		COVER-OUTLET
5	198245GS		METER-HOUR
6	191481GS		BOOT, Breaker Circuit
7	209677GS		BREAKER-CIRCUIT 25A
8	43437GS		OUTLET-120/240V TL30A
9	68759GS		OUTLET-120V 20A
10	84198GS		BOOT-CIRCUIT BREAKER
11	317605GS		BREAKER-CIRCUIT 20A
12	202997GS		DECAL
13	312572GS		DECAL
14	312571GS		DECAL
15	312969GS		TRIM-EDGE

Not For
Reproduction

Main Unit (313307)

Note: Unless noted otherwise, use the standard torque specifications

Mfg. No: 030467-0



Main Unit (313307)

REF NO	PART NO	QTY	DESCRIPTION
1	313312GS		CRADLE
2	313321GS		GRIP-HANDLE
3	313322GS		GRIP-HANDLE
4	75477GS		SCREW
5	312562GS		DECAL
6	312563GS		DECAL
7	197798GS		DECAL
8	312564GS		DECAL
9	200310GS		DECAL
10	B4986GS		DECAL
11	200311GS		DECAL
12	313043GS		HEATSHIELD
13	310718GS		HEATSHIELD
14	209775GS		BOLT
15	276928		DECAL
16	312561GS		DECAL
17	22097GS		WASHER, Lock, Split, 1/4"
18	47411GS		SCREW
19	312045GS		WASHER
20	189008GS		MUFFLER
21	83083GS		SCREEN
22	197861GS		NUT
23	311987GS		SCREW
24	67989GS		NUT
25	189009GS		SUPPORT-MUFFLER
26	208537GS		ADAPTER-ENGINE
27	193747GS		NUT
28	204885GS		SCREW
29	695398		GASKET, Exhaust
30	312012GS		MOUNT-VIBRATION
31	207824GS		SCREW
32	313364GS		END COVER
33	313320GS		VOLTAGE REGULATOR
34	312041GS		TERMINAL BLOCK
35	312042GS		BOLT
36	313323GS		BOLT
37	209441GS		BRUSH ASSY
38	312046GS		BOLT
39	49226GS		WASHER
40	209423GS		CARRIER-BEARING
41	313317GS		STATOR
42	313314GS		ROTOR
43	207878GS		NUT
44	194984GS		DECAL
45	313310GS		TANK-FUEL
46	311990GS		CAP-FUEL
47	209939GS		SEAL
48	311991GS		FILTER-SCREEN

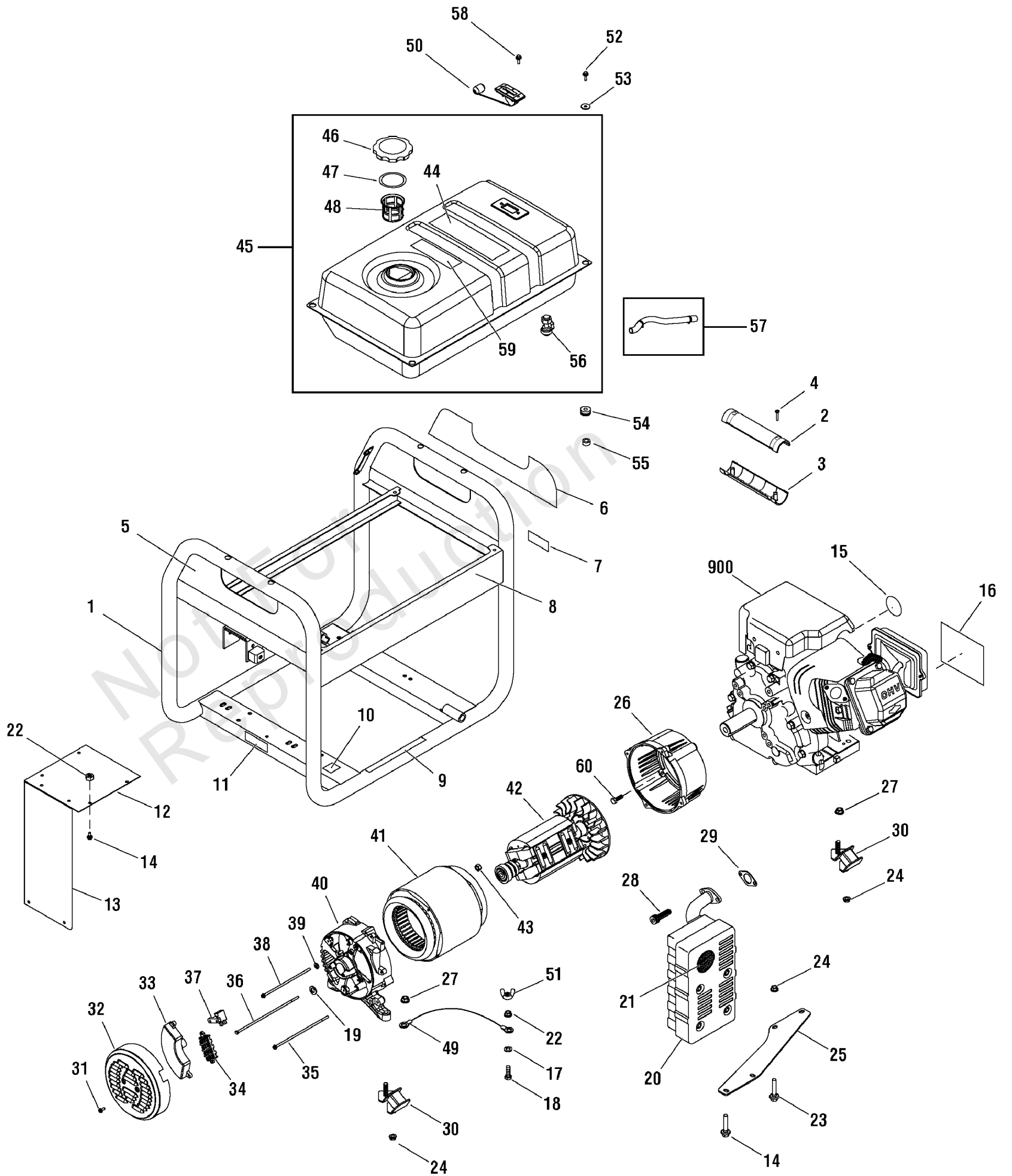
Footnotes:

** Contact Engine Manufacturer

Main Unit (313307)

Note: Unless noted otherwise, use the standard torque specifications

Mfg. No: 030467-0



Main Unit (313307)

REF NO	PART NO	QTY	DESCRIPTION
49	312040GS		WIRE
50	311992GS		GAUGE-FUEL
51	87680GS		NUT
52	209421GS		BOLT
53	312005GS		WASHER
54	312006GS		GROMMET
55	312010GS		SPACER
56	209417GS		VALVE-FUEL
57	791745		KIT-FUEL, Hose (Cut To Fit) -(Cut to fit)
58	197896GS		SCREW
59	188333GS		DECAL
60	313368GS		BOLT
900	-----		** ENGINE
--	312491GS		MANUAL-OPERATOR -(Not Illustrated)

Not For
Reproduction

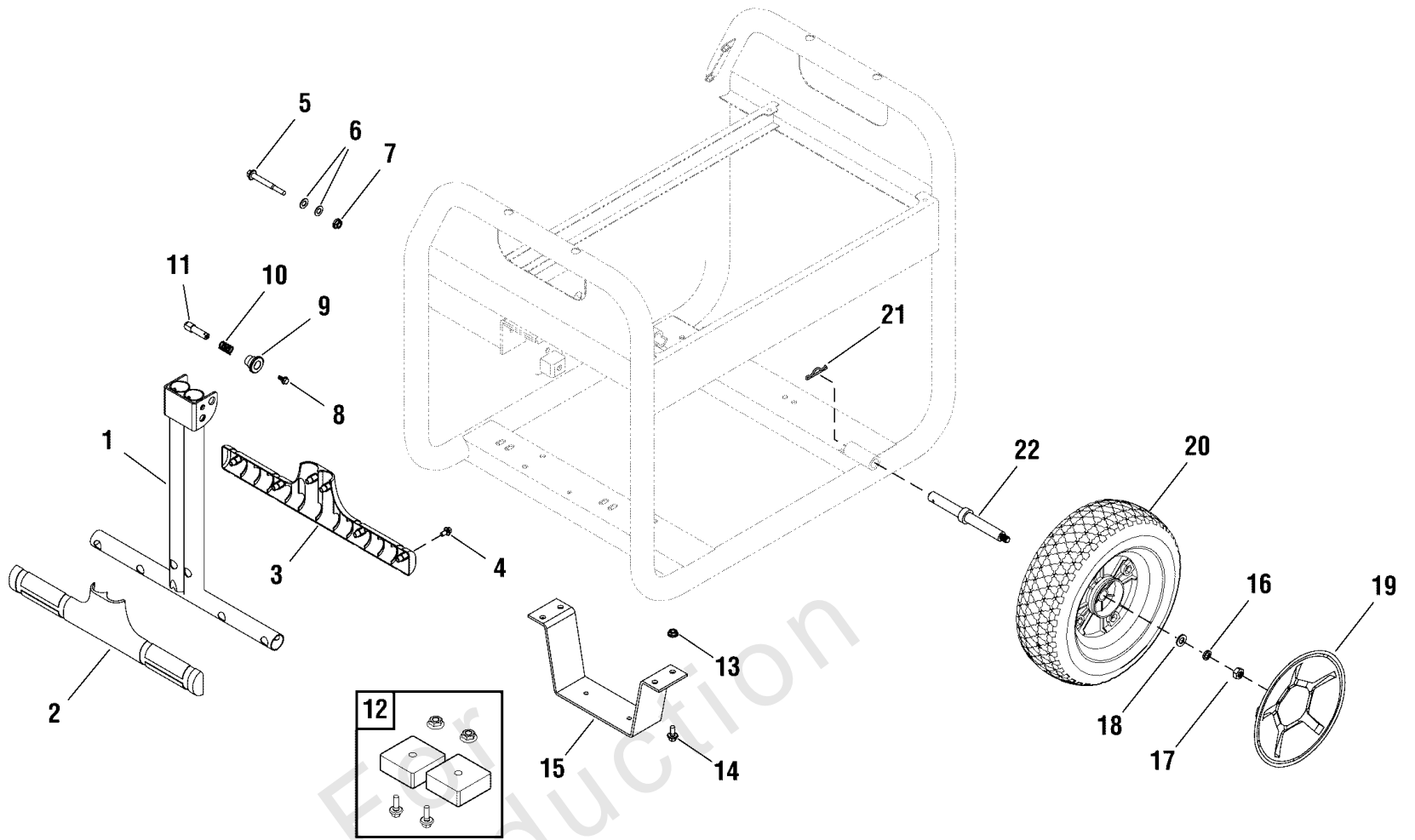
Footnotes:

** Contact Engine Manufacturer

Wheel Kit (312967)

Note: Unless noted otherwise, use the standard torque specifications

Mfg. No: 030467-0



Wheel Kit (312967)

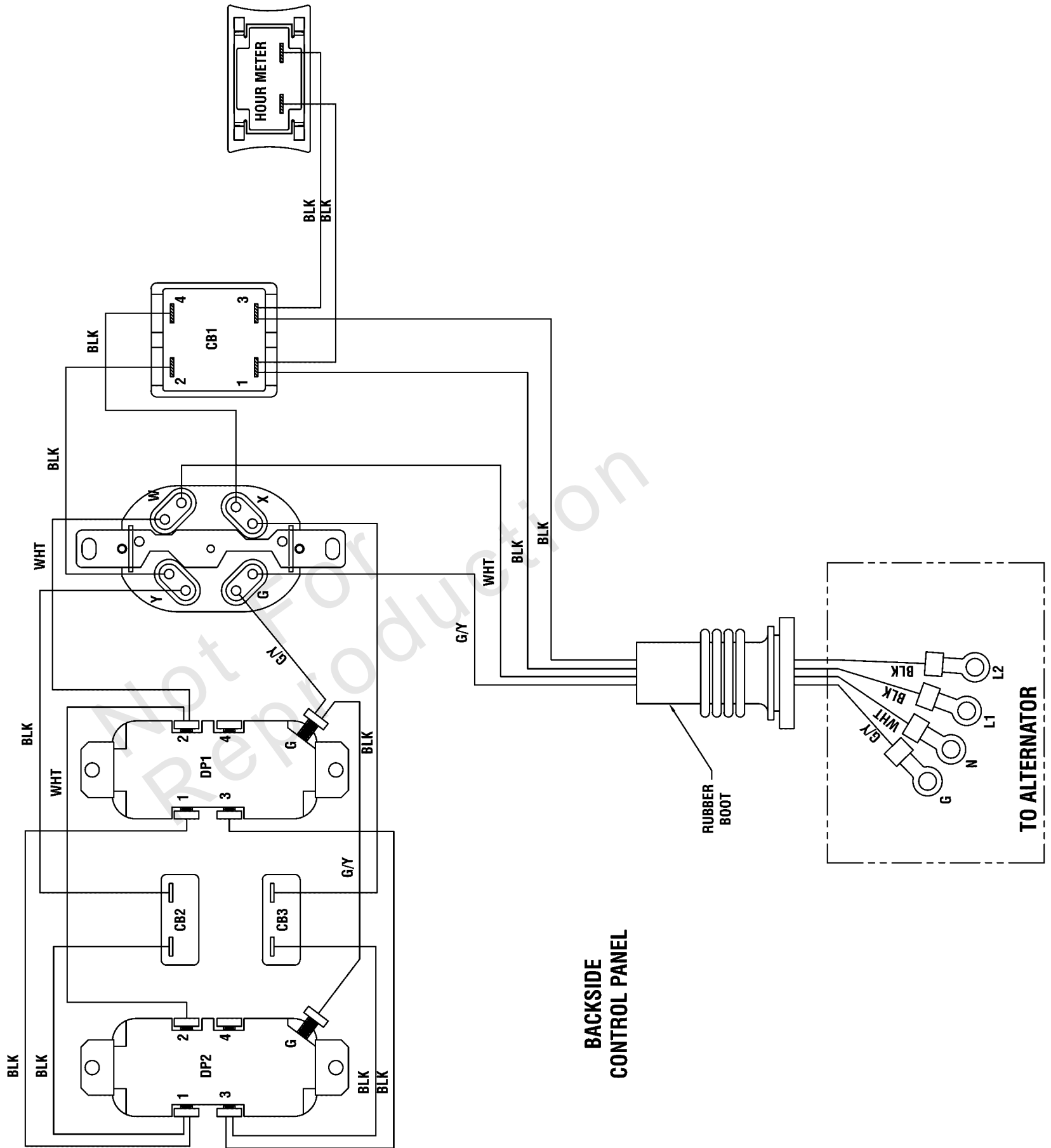
REF NO	PART NO	QTY	DESCRIPTION
1	312973GS		HANDLE
2	313284GS		GRIP-HANDLE
3	313283GS		GRIP-HANDLE
4	75477GS		SCREW
5	312974GS		BOLT
6	187104GS		WASHER
7	49820GS		NUT
8	207825GS		BOLT
9	312016GS		KNOB
10	312015GS		SPRING
11	312017GS		PIN
12	319285GS		MOUNT-VIBRATION
13	52857GS		NUT
14	42568GS		BOLT
15	312968GS		SUPPORT-LEG
16	46526GS		WASHER
17	209413GS		NUT
18	209419GS		WASHER
19	316418GS		HUBCAP
20	209322GS		WHEEL
21	5025210YP		PIN-HAIR .0915 x 1-7/8
22	312972GS		AXLE

Not For
Reproduction

Wiring Diagram (312495WD)

Note: Unless noted otherwise, use the standard torque specifications

Mfg. No: 030467-0



**BACKSIDE
CONTROL PANEL**

TO ALTERNATOR

Wiring Diagram (312495WD)

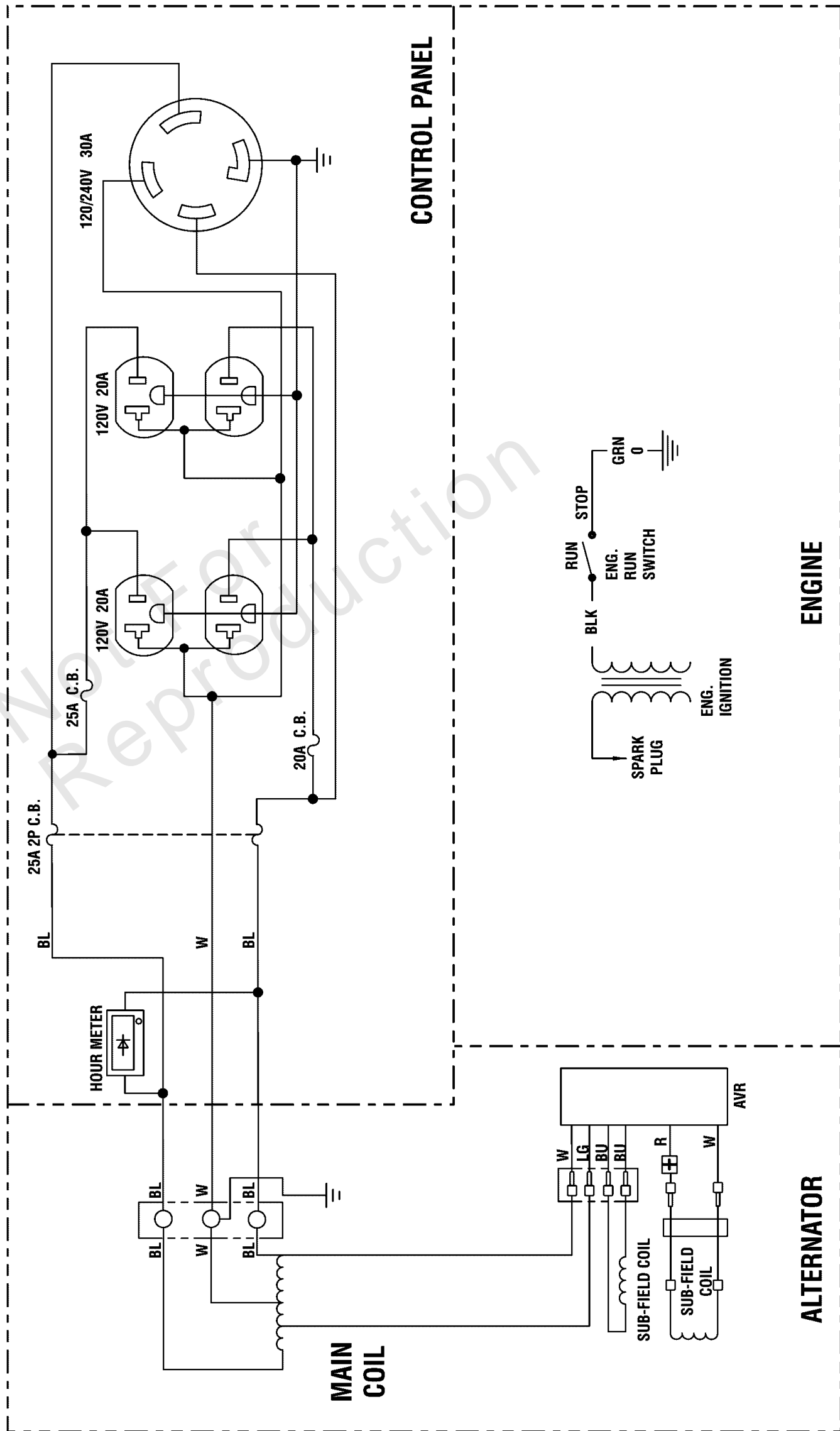
REF NO	PART NO	QTY	DESCRIPTION
--	----		Wiring Diagram Only
--	WARNING		Warning Generator Voltage Could Cause Electrical Shock or Burn Resulting in Death Or Serious Injury. To Avoid Electrical Shock Or Burn Hazard, Please Refer Service To Qualified Personnel.

Not For
Reproduction

Wiring Schematic (312495WS)

Note: Unless noted otherwise, use the standard torque specifications

Mfg. No: 030467-0



Wiring Schematic (312495WS)

REF NO	PART NO	QTY	DESCRIPTION
--	-----		Schematic Only
--	WARNING		Warning Generator Voltage Could Cause Electrical Shock or Burn Resulting in Death Or Serious Injury. To Avoid Electrical Shock Or Burn Hazard, Please Refer Service To Qualified Personnel.

Not For
Reproduction

Hardware Identification & Torque Specifications

Torque Specification Chart								
FOR STANDARD METRIC MACHINE HARDWARE (Tolerance ± 20%)								
Property Class	5.6		8.8		10.9		12.9	
	Class 5.6		Class 8.8		Class 10.9		Class 12.9	
Size Of Hardware	in/lbs	Nm.	in/lbs	Nm.	in/lbs	Nm.	in/lbs	Nm.
	ft/lbs		ft/lbs		ft/lbs		ft/lbs	
M3	5.88	.56	13.44	1.28	19.2	1.80	22.92	2.15
M4	13.44	1.28	30.72	2.90	43.44	4.10	52.56	4.95
M5	26.4	2.50	60.96	5.75	5.97	8.10	7.15	9.7
M6	44.64	4.3	7.3	9.9	10.3	14	12.1	16.5
M7	5.2	7.1	12.1	16.5	16.9	23	19.9	27
M8	7.7	10.5	17.7	24	25	34	29	40
M10	15	21	35	48	50	67	59	81
M12	26	36	61	83	86.2	117	103	140
M14	42	58	101	132	136	185	162	220
M16	64	88	147	200	210	285	250	340
M18	89	121	202	275	287	390	346	470
M20	126	171	290	390	405	550	486	660
M22	169	230	390	530	559	745	656	890
M24	217	295	497	375	708	960	840	1140
M27	320	435	733	995	1032	1400	1239	1680
M30	435	590	995	1350	1401	1900	1681	2280
M33	590	800	1349	1830	1902	2580	2278	3090
M36	759	1030	1740	2360	2441	3310	2935	3980
M39	988	1340	2249	3050	3163	4290	3798	5150

Torque Specification Chart						
FOR STANDARD MACHINE HARDWARE (Tolerance ± 20%)						
Hardware Grade	No Marks		SAE Grade 5		SAE Grade 8	
	SAE Grade 2		SAE Grade 5		SAE Grade 8	
Size Of Hardware	in/lbs	Nm.	in/lbs	Nm.	in/lbs	Nm.
	ft/lbs		ft/lbs		ft/lbs	
8-32	19	2.1	30	3.4	41	4.6
8-36	20	2.3	31	3.5	43	4.9
10-24	27	3.1	43	4.9	60	6.8
10-32	31	3.5	49	5.5	68	7.7
1/4-20	66	7.6	8	10.9	12	16.3
1/4-28	76	8.6	10	13.6	14	19.0
5/16-18	11	15.0	17	23.1	25	34.0
5/16-24	12	16.3	19	25.8	29	34.0
3/8-16	20	27.2	30	40.8	45	61.2
3/8-24	23	31.3	35	47.6	50	68.0
7/16-14	30	40.8	50	68.0	70	95.2
7/16-20	35	47.6	55	74.8	80	108.8
1/2-13	50	68.0	75	102.0	110	149.6
1/2-20	55	74.8	90	122.4	120	163.2
9/16-12	65	88.4	110	149.6	150	204.0
9/16-18	75	102.0	120	163.2	170	231.2
5/8-11	90	122.4	150	204.0	220	299.2
5/8-18	100	136	180	244.8	240	326.4
3/4-10	160	217.6	260	353.6	386	525.0
3/4-16	180	244.8	300	408.0	420	571.2
7/8-9	140	190.4	400	544.0	600	816.0
7/8-14	155	210.8	440	598.4	660	897.6
1-8	220	299.2	580	788.8	900	1,244.0
1-12	240	326.4	640	870.4	1,000	1,360.0

The guides and ruler furnished below are designed to help you select the appropriate hardware.



Nut, M8

Thread Diameter (mm)

Inside Diameter (in) Threads per inch

Nut, 1/2-16



Screw, M8- 1.25 x 25

Thread Diameter (mm) Distance between threads (mm) Body Length (mm)

Body Diameter Threads per inch Body Length (in)

Screw, 1/2- 16 x 2



Standard Hardware Sizing

When a washer or nut is identified as 1/2" (M8), this is the *Nominal size*, meaning the *inside diameter* is 1/2 inch (8mm metric thread diameter); if a second number is present it represents the *threads per inch* (distance between threads).

When bolt or capscrew is identified as 1/2 - 16 x 2" (M8 - 1.25 x 50), this means the *Nominal size*, or body diameter is 1/2 inch (8mm metric thread diameter), the second number, 16, represents the *threads per inch*, (*distance between threads*). The final number is the body length of the bolt or screw, 2 inches (50mm).

NOTES

- These torque values are to be used for all hardware excluding: locknuts, self-tapping screws, thread forming screws, sheet metal screws and socket head setscrews.
- Recommended seating torque values for locknuts:
 - for prevailing torque locknuts - use 65% of grade 5 torques.
 - for flange whizlock nuts and screws - use 135% of grade 5 torques.
- Unless otherwise noted on assembly drawings, all torque values must meet this specification.

Common Hardware Types

Hex Head Capscrew



Washer



Carriage Bolt



Hex Nut

Wrench & Fastener Size Guide

1/4" Bolt or Nut Wrench—7/16"	5/16" Bolt or Nut Wrench—1/2"	3/8" Bolt or Nut Wrench—9/16"	7/16" Bolt or Nut Wrench (Bolt)—5/8" Wrench (Nut)—11/16"	1/2" Bolt or Nut Wrench—3/4"
M6 Bolt or Nut Wrench—10mm	M8 Bolt or Nut Wrench—13mm	M10 Bolt or Nut Wrench—17mm	M12 Bolt or Nut Wrench—19mm	M14 Bolt or Nut Wrench—22mm

